

Regional Cotton Extension Officer –

Do you know someone who would be interested in....

The Cotton Catchment Communities Cooperative Research Centre through the Queensland Department of Primary Industries and Fisheries has vacancies for three experienced Regional Cotton Extension Officers, based full-time permanent at Dalby and Goondiwindi, along with a temporary part-time position at St. George. Applications Close: Monday, 4th December 2006.

Further information and a Position Description can be obtained from Geoff McIntyre: 07 4669 0801, Letitia Cross: 0428 657 849 or from [Jobs Online](http://jobs.govnet.qld.gov.au/) (<http://jobs.govnet.qld.gov.au/>)

Cotton Pest Management Guide – Is currently at the printers with plans to distribute ASAP, I will let you know when it is available from the Goondiwindi DPI&F.

Evaporation -

Have you ever wondered how much water you are losing from your storage or in the instance that you already know have you ever wondered the cost/benefit of evaporation mitigation technologies. The National Program for Sustainable Irrigation (NPSI) has developed a Ready Reckoner which will enable you to answer these questions with a step by step guide on the link below.

What you need:

- The dimensions of your dam
- The pan evaporation data (linked from NRM Qlds SILO website)
- The seasonal variation in the capacity of the dam
- The costs of any evaporation mitigation technology.

The spreadsheet will then calculate the amount of evaporation saved (to the nearest 100,000Litres) and the cost of doing so - It might be worth checking out just log onto:

http://npsi.gov.au/readyreckoner/Ready_Reckoner.xls

Day Degrees

Day degrees are a measure of the crop progress using temperature. For a crop to reach a certain stage of growth, it requires a certain amount accumulated heat units. The table below shows this

Crop Stage	Cumulative Day Degrees needed
Emergence	80
5 true leaves	330
First Square	505
First Flower	777

Cold Shock Days –

Goondiwindi 2006 - 4 days

Mungindi 2006 – 9 days

Cold shocks occur when daily minimum temperatures fall below 11 °C, which may cause growth and development the following day to be reduced regardless of the maximum temperature reached. Cold shocks particularly affect the rate of early development including the timing of emergence, squaring and

flowering but have no association with boll period. So for each cold shock day there is an increase in heat units required (5.2 day degrees) to achieve first square and first flower.

For example: First flower requires an accumulation of 777DD, Goondiwindi has had 4 cold shock days therefore a further 20.8 DD (4x5.2DD) will be required before the crop reaches First Flower, a total of 797.8DD.

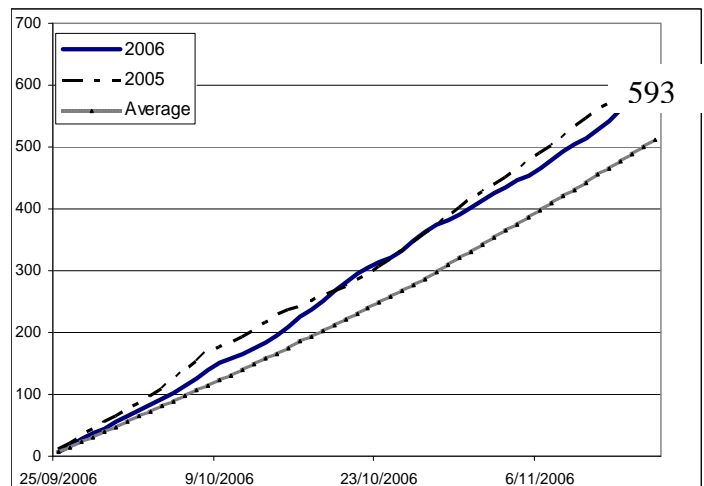
Hot Days 2006/07 –

Goondiwindi 2006/07 - 6 days

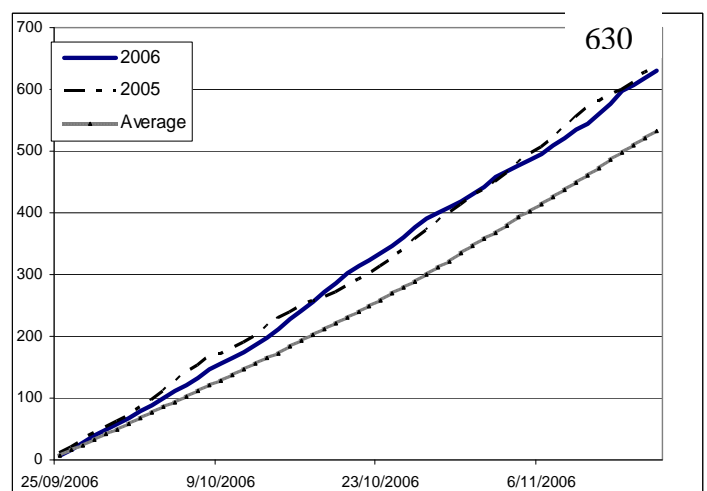
Mungindi 2006/07 – 10 days

At high temperatures many biological processes don't respond as markedly to temperature as they do at moderate temperatures. Hot days are classed as days in which the maximum air temperature is equal to or above 36°C

- Goondiwindi 25th Sept – 17th Nov 2006



- Mungindi 25th Sept – 17th Nov 2006



Day Degrees for all locations can be calculated using the web tool on the cotton CRC website. This facility has just been updated and now you can enter your own crop parameters (eg planting date, emergence etc) for a more detailed report. Check it out.

<http://www.cotton.crc.org.au/Tools/Agronomy/SILODayDegCalc.htm>